

OPTIONEN

VERFÜGBARKEIT DER OPTIONEN ZUEINANDER

	S002	S003	S004	S100	S101	S105	S106	S107	S108	S300	S301	S306	S400	S401
S000 - Counter/Encoder Interface	✓	✓	✓	✓	✓	✓	✓	✓	✓	✓	✓	✓	✓	✓
S001 - Hardware Watchdog	✓	✓	✓	✓	✓	✓	✓	✓	✓	✓	✓	✓	✓	✓
S002 - USB Serial Interface	✓	-	-	✓	✓	✓	✓	✓	✓	✓	✓	✓	✓	✓
S003 - USB Ethernet	-	✓	-	✓	✓	✓	✓	✓	✓	✓	✓	✓	✓	✓
S004 - USB Keyboard	-	-	✓	✓	✓	✓	✓	✓	✓	✓	✓	✓	✓	✓
S006 - Fast Event I/O's	✓	✓	✓	✓	✓	✓	✓	✓	✓	✓	✓	✓	✓	✓
S100 - MODBUS RTU/TCP V3	✓	✓	✓	✓	✓	✓	✓	✓	✓	-	-	-	✓	✓
S101 - BACNET	✓	✓	✓	✓	✓	✓	✓	✓	✓	-	-	-	-	-
S102 - J1939	✓	✓	✓	✓	✓	✓	✓	✓	✓	✓	✓	✓	✓	✓
S103 - CANopen Master	✓	✓	✓	✓	✓	✓	✓	✓	✓	✓	✓	✓	✓	✓
S104 - EtherCAT Master	✓	✓	✓	✓	✓	✓	✓	✓	✓	✓	✓	✓	✓	✓
S105 - Profinet Device (Slave)	✓	✓	✓	✓	✓	✓	✓	*	*	*	*	*	✓	✓
S106 - OPC UA Server	✓	✓	✓	✓	✓	✓	✓	✓	✓	*	*	*	✓	✓
S107 - EtherNet/IP Scanner (Master)	✓	✓	✓	✓	✓	*	✓	✓	*	*	*	*	✓	✓
S108 - EtherNet/IP Adapter (Slave)	✓	✓	✓	✓	✓	*	✓	*	✓	*	*	*	✓	✓
S109 - VPN Client	✓	✓	✓	✓	✓	✓	✓	✓	✓	✓	✓	✓	✓	✓
S111 - FTP Server	✓	✓	✓	✓	✓	✓	✓	✓	✓	✓	✓	✓	✓	✓
S112 - NTP Client	✓	✓	✓	✓	✓	✓	✓	✓	✓	✓	✓	✓	✓	✓
S113 - CODESYS SNMP Connectivity	✓	✓	✓	✓	✓	✓	✓	✓	✓	✓	✓	✓	✓	✓
S114 - CODESYS WebVisualization	✓	✓	✓	✓	✓	✓	✓	✓	✓	✓	✓	✓	✓	✓
S300 - Motion Basic+Softmotion	✓	✓	✓	-	-	*	*	*	*	✓	-	-	✓	✓
S301 - Motion Basic+Softmotion+CNC	✓	✓	✓	-	-	*	*	*	*	-	✓	-	✓	✓
S306 - Motion Basic	✓	✓	✓	-	-	*	*	*	*	-	-	✓	✓	✓
S400 - Powertrack Basiskomm.	✓	✓	✓	✓	-	✓	✓	✓	✓	✓	✓	✓	req	req
S401 - Powertrack Servicetool	✓	✓	✓	✓	-	✓	✓	✓	✓	✓	✓	✓	req	✓

Nicht aufgeführte Optionen werden als grundsätzlich kompatibel angesehen

✓ Option ist für Produkt bestellbar

- Option ist für Produkt nicht bestellbar

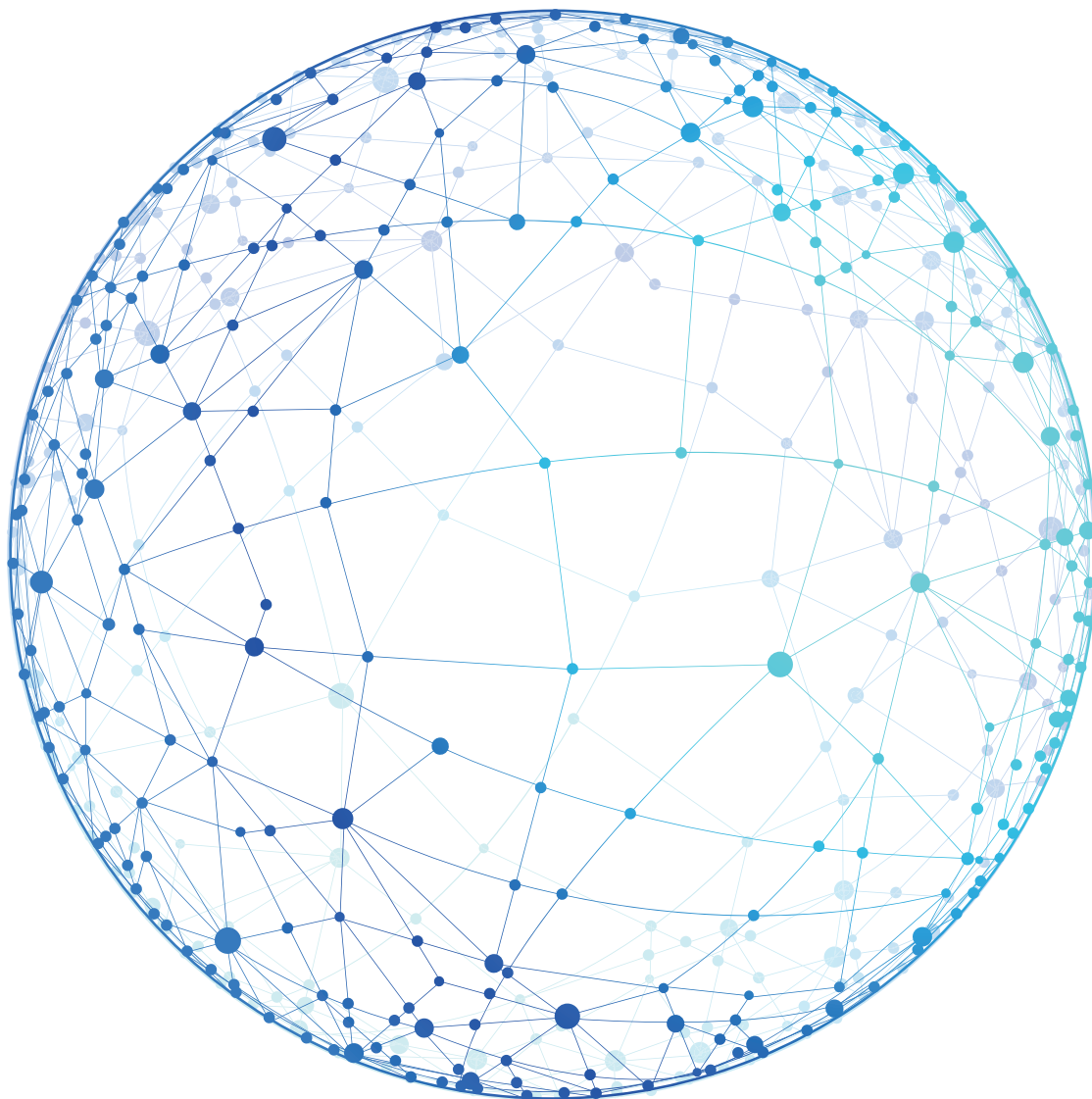
* Separate Netzwerkschnittstelle erforderlich

req Optionen bedingen sich gegenseitig

a.A. auf Anfrage

OPTIONEN

VERFÜGBARKEIT DER OPTIONEN ZUEINANDER



Das Vertriebsteam erreichen Sie unter:

T +49.7121.894-144 | controls@berghof.com

Berghof Automation GmbH | Harretstraße 1 | 72800 Eningen u.A. |
www.berghof-automation.com | Änderungen und Irrtümer vorbehalten.

